

1. Ritu wants to compare the mass and volumes of three objects. Which two instruments should be used?



Correct Answer : B

---

2. Which of the following describes Dengue?

- A. Infectious, non-contagious
- B. Non-infectious, non-contagious
- C. Infectious, contagious
- D. Non-infectious, contagious

Correct Answer : A

---

3. Mona listed following key words related with properties of sources of energy –

- I. Non-exhaustible
- II. Easily available
- III. Cheap
- IV. Renewable

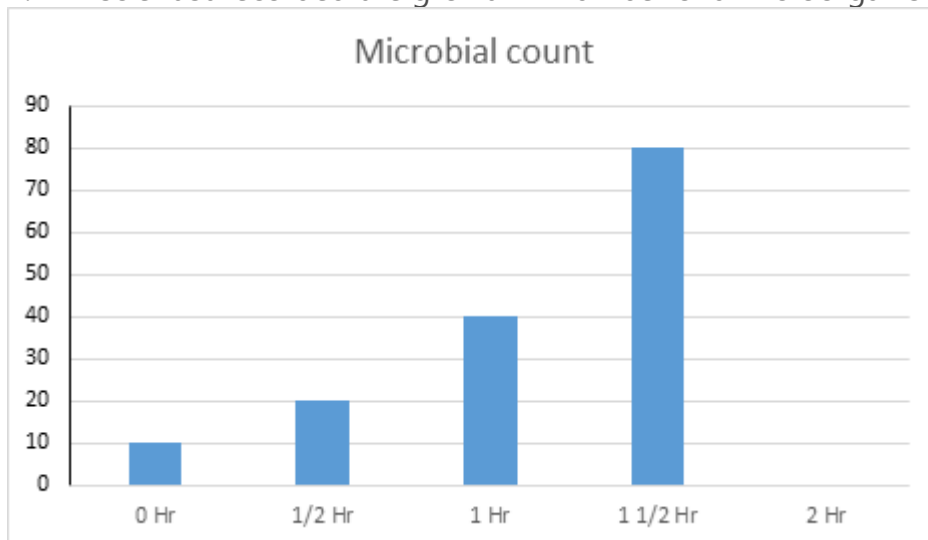
Which of these meets the criteria listed by Mona?

- A. Nuclear power
- B. Thermal energy
- C. CNG
- D. Biogas

Correct Answer : D

---

4. A scientist recorded the growth in number of a microorganism for two hours.



What would be the number of microorganism after 2 hours?

- A. 90
- B. 100
- C. 120
- D. 160

Correct Answer : D

---

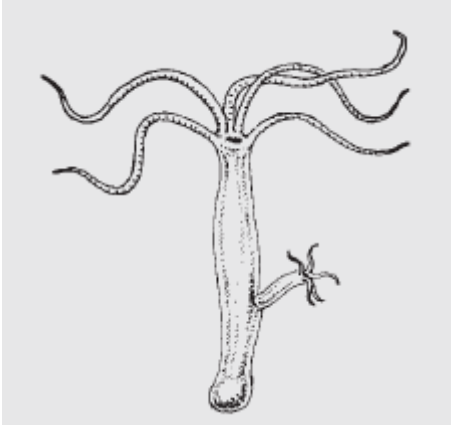
5. Which form of energy is present in fossil fuels?

- A. Solar energy
- B. Chemical energy
- C. Electrical energy
- D. Mechanical energy

Correct Answer : B

---

6. Which method of reproduction has been shown in the given diagram?



- A. Budding
- B. Fragmentation
- C. Segmentation
- D. Conjugation

Correct Answer : A

---

7. It is easy to put a sharp nail on a wood log than a blunt nail because of –

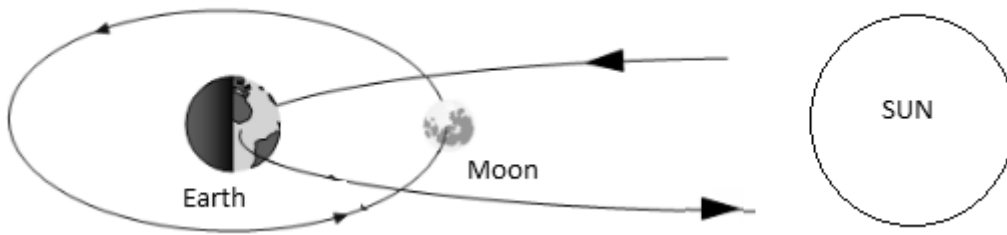
- A. Large volume
- B. Large surface area
- C. High pressure
- D. Heavy weight

Correct Answer : C

---

8.

Which phenomenon could be best explained by the given diagram?



- A. solar eclipse
- B. lunar eclipse
- C. formation of day and night
- D. occurrence of seasons

Correct Answer : A

---

9. Which of the following best lists the features of solar energy?

- A. Inexhaustible, renewable, direct use
- B. Inexhaustible, non-polluting, continuous supply
- C. Renewable, non-polluting, huge source
- D. Renewable, direct use, huge source

Correct Answer : C

---

10. Four students collected following materials in their garden compost pits and covered it with soil. They watered their pits occasionally.

Student    Materials collected in garden pits

Manu      Dry leaves, vegetable peels, banana peels, left-over food

Nidhi     Paper cups, biscuit wrapper, tissue paper, plastic bottles

Shyam    Tea leaves, Vegetable peels, waste bread, earthworm

Elli        Sand, fertiliser, plastic bottles, earthworm

After one and half months, only two students could get manure from their pits. They were -

- A. Manu and Nidhi
- B. Nidhi and Shyam
- C. Manu and Shyam
- D. Elli and Manu

Correct Answer : C

---

11. Which of these is a chemical change?

- A. Freezing of lakes
- B. Souring of milk
- C. Mixing of soil and water
- D. Making aluminium foil from wire

Correct Answer : B

---

12. Raveena wants to see if plants can grow when watered with X brand of cold drink. She noted down some options as following –

- I. Take two different potted plants
- II. Take two same potted plants
- III. Give equal quantity of water to both plants
- IV. Give water to one plant and the same amount of X cold drink to another plant
- V. Put both plants under Sun
- VI. Put one plant indoor, another under sun

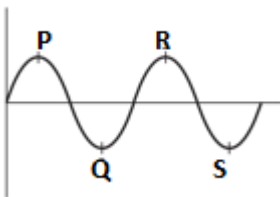
Which set of options would provide Raveena desirable result?

- A. I, II, V
- B. I, IV, VI
- C. II, IV, V
- D. II, IV, VI

Correct Answer : C

---

13. Distance PR in the illustration of the shown wave is called -

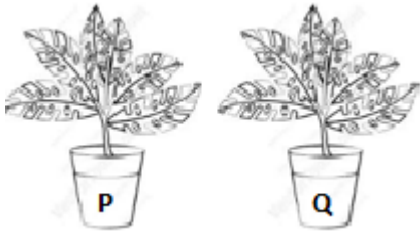


- A. Pitch
- B. Amplitude
- C. Frequency
- D. Wavelength

Correct Answer : D

---

14. Raja wanted to see if plants grow better with mineral water of X brand of tap water. He took two same potted plants as shown below.



Which of the following would give him best result?

- A. P = Only tap water; Q = Only mineral water
- B. P = Both tap and mineral water; Q = Only mineral water
- C. P = No water; Q = Mineral Water
- D. P = Both tap and mineral water; Q = Both tap and mineral water

Correct Answer : A

---

15. Which part of human cell is largely responsible for transfer of traits from parents to the progeny?

- A. Ribosomes
- B. Cytoplasm
- C. Nucleus
- D. Cell membrane

Correct Answer : C

---

16. Which of the following lists the layer in order of increasing distance from the earth?

- A. Troposphere, mesosphere, stratosphere
- B. Troposphere, stratosphere, mesosphere
- C. Stratosphere, troposphere, mesosphere
- D. Stratosphere, mesosphere, troposphere

Correct Answer : B

---

17. In an electromagnet, a conductor is coiled around -

- A. a test tube
- B. an iron nail
- C. a roll of paper
- D. a pencil cell

Correct Answer : B

---

18. Which of the following is NOT an advantage of irrigation?

- A. keeps soil insects away
- B. improves soil aeration
- C. dissolves nutrients in fertilisers
- D. helps in germination of seeds

Correct Answer : B

---

19. Which of the following is the list of gases found in the atmosphere in increasing order of abundance?

- A. Nitrogen, oxygen, carbon dioxide
- B. Oxygen, carbon dioxide, nitrogen
- C. Nitrogen, carbon dioxide, oxygen
- D. Carbon dioxide, oxygen, nitrogen

Correct Answer : D

---

20. Which of the following is correct sequence of events related to fertilisation?

- A. Release of ovum " Formation of zygote Fertilisation Maturation of ovum
- B. Maturation of ovum " Release of ovum Formation of zygote Fertilisation
- C. Maturation of ovum " Release of ovum Fertilisation Formation of zygote
- D. Release of ovum " Maturation of ovum Formation of zygote Fertilisation

Correct Answer : B

---